

# Great View Lot

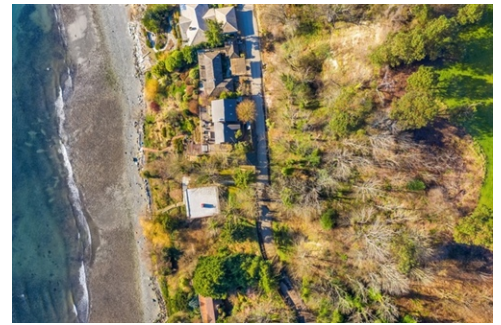


Auction July 16th @ 6pm



## Magnolia Area Lot, Seattle , WA 98199

- » Land | Lot: 3,188 ft<sup>2</sup>
- » Views of Puget Sound, Bainbridge Island, and the Olympic Mountains
- » Vacant residential land
- » 1974 Perkins Lane W, Seattle, WA 98199
- » Near Discovery Park, one of Seattle's largest parks, offering beaches, forest trails, and waterfront access.
- » More Info: [MagnoliaAreaLot.IsForSale.com](http://MagnoliaAreaLot.IsForSale.com)



Tim Stuart  
 Real Estate Auctioneer  
 (503) 597-2444 (Office)  
 (503) 680-4959 (Direct/text)  
 timstuart@kw.com  
<http://www.TimStuart.kw.com>



Keller Williams Realty Portland Premiere  
 7504 SW Bridgeport Road  
 Portland, OR 97224  
 (503) 680-4959



### Live Simulcast Auction -

Perkins Lane W, Seattle, WA 98199 is a small residential vacant land parcel located in the sought-after Magnolia neighborhood overlooking Puget Sound. Property Highlights Property type: Vacant residential land Lot size: Approximately 3,188 sq. ft. (0.073 acres) Parcel number: 1364300575 Location: Perkins Lane W, Seattle, WA 98199 Views: Puget Sound, Bainbridge Island, and the Olympic Mountains Utilities: Water and sewer are available in the street; electricity and natural gas are available nearby Reports completed by seller: Geotechnical and arborist reports available Near Discovery Park, one of Seattle's largest parks, offering beaches, forest trails, and waterfront access. Close to Magnolia Village shopping, restaurants, and everyday amenities.

Live Simulcast Auction July 16th @ 6pm Pre-Bidding at [KWPP.HiBid.com](http://KWPP.HiBid.com)

